

OEM system board with ATmega128 MCU, USB UART, RS232, SD-Card, RTC and Power.

Savvy128 is the microcontroller motherboard for the SavvyBOX application development platform. It provides the Atmel AVR ATmega128 microcontroller, onboard 3.3V voltage regulator, optional 5V regulator, standard RS232 (optional RS485) serial port with DB9 connector, USB2.0 full speed UART converter, MMC/SD-card header, realtime clock chip with optional GoldCap, push buttons, two-color LED, onboard status LED, infrared detector, expansion headers with all ATmega128 signals and a special header for SavvyDISP, which provides a character LC-display, four push-buttons and an LED.



Please Note – The new Savvy128 V1.3 version has been slightly redesigned. It now provides an additional DIP8 footprint, which can carry a 5V regulator (TPS7350QP). This allows to supply the Savvy128 board with up to 10V externally and have two regulated voltages for the internal components. This allows to supply the CPU at 5V (and use crystal frequencies up to 16MHz) whilst the SD-card is powered from the 3.3V regulator – or power everything from the 3.3V regulator.

Important notice: As already introduced with V1.2, the orientation of jumper J1 is still rotated 180° compared to the original V1.0 board!!! See section "power supply" for details.

SCOPE OF DELIVERY

Savvy128 comes as a high quality SMT board with all SMT components assembled and all non-SMT components added as a Components Kit, hence the customer can add components and functionality as required by the application. Optionally available is an RS485 kit with MAX485 driver and socket, as well as a GoldCap 1F capacitor, when backing up the realtime clock is necessary. An SD-card is also available as accessory at www.chip45.com.

POWER SUPPLY

Savvy128 provides an external power connector CON1 (see picture right) and a matching screw type cable connector in the components kit. There exist several configurations for supplying the board externally or from the local voltage regulator or from USB.

On place U13 a 5V regulator can be assembled. Its output voltage (V50) goes to the 3.3V regulator and can supply the onboard components, depending on J1 (see b)). If the 5V regulator is not used, a wire needs to be soldered accross pins 4 and 5 of the U13 footprint. In this case, the 3.3V regulator is powered directly from the external supply voltage (Vext).

Depending on J1, the onboard components are supplied with 5V or the external voltage, depending whether U13 is assembled, (J1 to position 1-2) or they can be supplied with 3.3V (J1 to position 2-3). In case the external voltage is used, it must not exceed $5V \pm 10\%$.

The sd-card is always powered from the onboard 3.3V regulator, since with Savvy128 V1.2 level shifter between the sd-card and the ATmega128 have been introduced.

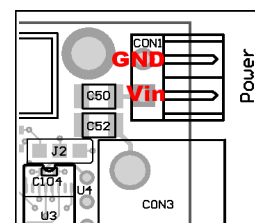
It is also possible to power the board from USB bus power. In that case jumper J1 needs to be set to position 2-3 and jumper J3 has to be set according to chapter „USB 2.0 Port“.

With USB powered configuration it is not possible (and not necessary) to assembled the U13 5V regulator!

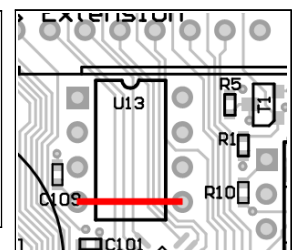
Pin 1 of expansion connector CON8 can be connected either to the external input voltage Vin or to the output of the voltage regulator VCC. See table and picture on the right for setting and location of J11. Pad 1 is the right red pad in the picture.

Jumper J11	Voltage at CON8 / Pin1
1-2	local VCC
2-3	external Vin

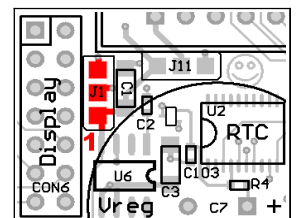
J11 jumper settings



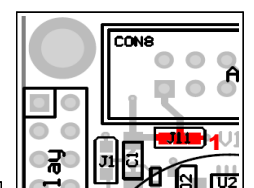
power connector



Optional 5V regulator



J11 location



J11 location

SYSTEM RESET

A proper reset signal is generated onboard by R1, D1 and C6. The internal brown out reset detection of the ATmega128 controller is disabled by default, since it's dependent on the supply voltage.

Jumper J1	Comment	Input Voltage Vin	Onboard VCC	Maximum Current Imax
1-2	The 3.3V regulator is bypassed. Only SD card is supplied 3.3V.	+5V±10% +3.3V±10%	+5V±10% +3.3V±10%	n/a n/a
2-3	All components are supplied from the regulator with 3.3V.	+4V +6V +10V +12V	+3.3V +3.3V +3.3V +3.3V	156mA 104mA 63mA 52mA

(Maximum current values are given at 25°C/77°F, for higher temperature see datasheet. Please note: These example values are due to maximum power dissipation of the voltage regulator and are not the real power consumption of the onboard components!)

J1 jumper settings and characteristics

SYSTEM CLOCK

By default the ATmega128 on Savvy128 runs with the internal RC-oscillator set to 8MHz. The frequency of the RC-oscillator can be tuned to 1MHz, 2MHz, 4MHz and 8MHz by changing fuse bits CKSL3..0 with an ISP oder JTAG adapter. See ATmega128 data sheet on page 39 for details.



Location of X1

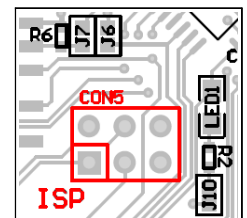
Additionally to the internal RC-oscillator an external quartz crystal X1 in HC49 package can be assembled beside the ATmega128. See picture on the right for location of X1. The maximum crystal frequency depends on the supply voltage of the ATmega128 (e.g. 0-8MHz @ VCC=2.7-5.5V, 0-16MHz @ VCC=4.5-5.5V), the minimum frequency for a higher frequency crystal is about 400kHz, alternatively a watch crystal with 32768Hz can be connected as X1. In any case, the fusebits CKSEL3..0 and CKOPT need to be set according to the desired oscillator option. See datasheet chapter „System Clock and Clock Options“.

MEMORIES

The ATmega128 provides 128kbytes of onchip, non-volatile Flash memory for program code storage, 4kbytes of onchip application SRAM and additional 4kbytes of onchip non-volatile EEPROM memory.

IN-SYSTEM PROGRAMMING (ISP)

CON5 is the standard 6-pin Atmel AVR ISP connector and can be used with most ISP adapters (e.g. stk200/300 compatible adapters like CrispAVR-200 by chip45.com or Atmel's stk500) and software (e.g. uisp, avrdude, PonyProg, etc.). Keep in mind, that the ATmega128 shares the ISP signals PDI/PDO with UART0, hence serial communication might be blocked as long as the ISP adapter is connected.

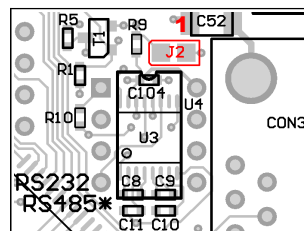


ISP connector

Be careful when changing fusebits! By selecting an improper combination of fuse bits, it is possible to enter states, where no further ISP programming is possible (e.g. disabling ISP by SPIEN, selecting clock crystal with no crystal assembled or selecting external clock signal with no signal present).

SERIAL RS232/RS485 PORT

RS232 level signals are provided by the onboard MAX3221 (U3) RS232 transceiver, connected to UART0 of the ATmega128. U3 is enabled by default and can be disabled by closing jumper J2 (see picture right for location). The RS232 signals are available at a standard DB9 male connector CON3.



J2 and RS232 port

DB9 male	RS232 signal	RS485 signal
1	-	-
2	RXD	-
3	TXD	A
4	-	-
5	GND	GND
6	-	-
7	-	-
8	-	B
9	-	-

RS232 connector pinout

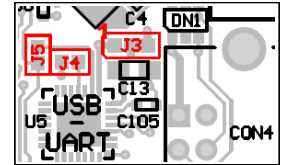
Optionally a common RS485 transceiver (e.g. MAX485) can be assembled as standard DIL8 device on footprint U4, right above the MAX3221. Be sure to disable the MAX3221 with jumper J2 before assembling the RS485 chip!

The table on the right shows the pinout of the DB9 male connector in both RS232 and RS485 mode. The direction pin DE/RE of the half duplex RS485 transceiver is connected to Pin 4 (signal PE2) of the ATmega128, which can switch between send mode (PE2 = high) and receive mode (PE2 = low).

During ISP programming of the ATmega128 the /RESET signal is asserted and disables the RS232 driver MAX3221 through transistor T1. This avoids the RXD signal of the MAX3221 driving against the ISP signal PDI from the ISP adapter.

USB 2.0 PORT

Savvy128 provides a USB 2.0 full speed to UART interface based on the CP2102 chip by Silicon Laboratories (www.silabs.com). The USB chip is connected to UART1 of ATmega128 (signals RXD1/TXD1) and converts USB bus data format to UART format at a baudrate of up to 921600 baud. The USB port is externally available at the standard USB-B connector CON4.



USB jumpers

Before you can use the USB port, power needs to be applied to the USB chip via jumper J3. There exist three configurations for Savvy128, which are listed in the table on the right. It is important, that when powering either just the USB chip from USB bus power or powering the whole board from USB bus power, the external V_{in} voltage must be in the range of 4.0V to 5.25V, due to the USB chip electrical characteristics. Jumper J1 (see chapter Power Supply above) must be set to using the onboard voltage regulator.

Jumper J3	USB Power Configuration
1-2	USB chip is powered from USB bus
2-3	USB chip is powered from V_{in} ($4.0V \leq V_{in} \leq 5.25V$)
1-2-3	whole board is powered from USB bus ($4.0V \leq V_{in} \leq 5.25V$)

USB jumper/power configuration

A royalty-free virtual COM port driver for Windows, MacOSX and Linux is available for download at www.chip45.com. Please install the USB driver prior to connecting the module to the PC.

The CP2102 offers an integrated EEPROM for storing USB parameters like VID, PID, product string and serial number, hence providing the possibility to individualize a product based on Savvy128, by customizing these parameters. Silabs offers a free Windows tool, as well as another tool for generating a customized Windows USB driver. By providing such a driver to your customers, your product will be recognized immediately when connected to a PC and will be registered in Windows control panel with its unique product name. Later your product will be assigned the same COM port number each time it is connected to the PC, which simplifies access to your product from PC applications.

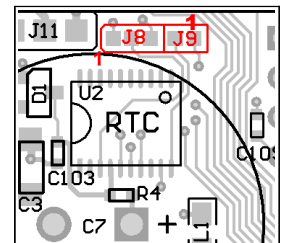
The tools and the corresponding application notes (AN144 and AN220) by Silabs are also available at <http://www.chip45.com>.

REALTIME CLOCK RTC

Savvy128 provides a realtime clock chip RTC-8564JE, which is connected via I²C bus (SDA/SCL) to the ATmega128 controller (pins PD0/PD1). The RTC-8564 provides one configurable clock output, which can be connected to ATmega128 Timer2 input (pin PD7) by setting jumper J8 to position 1-2, whilst position 2-3 disables the clock output. J8 should be set to either position before operation to ensure a well-defined state of the clock output enable pin of the RTC.

Jumper J8	clock output
1-2	clock output enabled
2-3	clock output disabled
Jumper J9	interrupt to INT7
closed	interrupt enabled
open	RTC interrupt not used

RTC jumper settings



RTC jumper location

The interrupt output of the RTC can be connected to INT7 of the ATmega128 (pin PE7) by closing jumper J9. Please see the RTC-8564 datasheet (available for download at www.chip45.com) for further details on the clock chip.

If a battery or capacitor backup of the RTC is desired, it is possible to assemble a standard 1F GoldCap right above the RTC chip, see large circle C7 in the picture above. A suitable GoldCap is available as accessory at www.chip45.com. Simple charging of the capacitor is done by diode D4 and resistor R4, which limits charging current to 10mA. It is also possible to connect a battery to the pads of C7 instead of the GoldCap. In that case another diode has to be put in series to the batterie, to avoid current flowing into the battery, while the board is powered!

With the standard 1F GoldCap capacitor a backup time of about 140 days at 5V power supply and about 100 days at 3.3V power supply can be expected.

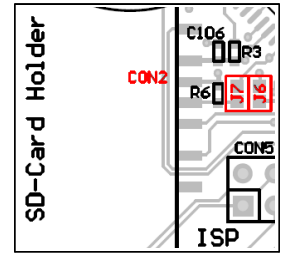
Note: The Savvy128 has no onboard I2C 4k7 pull-up resistors, hence those have to be added externally (at CON7 pins 8+9). Alternatively the MCU integrated pin pull-up resistors can be activated, but since they have a much higher resistance, the maximum clock rate is limited!

MMC/SD-CARD INTERFACE

Savvy128 provides a spring-eject socket for MMC/SD-cards. The card is connected internally to the SPI interface of the ATmega128 controller (pins PB0..3, PB0 is chip select output), hence MMC/SD-cards are used in SPI mode. Two jumpers J6 and J7 allow to also route the card's card detect signal and write protect signal to the ATmega128 controller. See table for details.

Jumper J6	write protect WP
closed	WP connected to PB4
open	WP not used
Jumper J7	card detect CD
closed	CD connected to INT6
open	CD not used

SD-card jumper settings

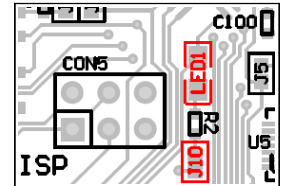


SD card and jumpers

From Savvy128 boards V1.2 and newer the SD-card is always supplied with 3.3V and level shifters are integrated to interface it to the processor.

STATUS LED

A preassembled small status LED is connected to the ATmega128 OC2/OC1B/PB7 pin. Configuration is low-active, hence the LED flashes, when the pin is set to low. The LED is available after closing jumper J10, see picture on the right for location. J10 is already closed by default, since it is used to indicate proper initialization of the preinstalled bootloader (see below).



status LED

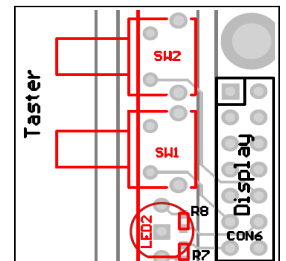
PUSH BUTTON AND LED

Two push buttons and one two-color LED is available as control elements on the front side/panel beside the MMC/SD-card slot. Both buttons and the duo-LED is included in the components kit. See table on the right for connection of the components to the ATmega128 controller and picture for components location.

The buttons and the duo-LED share pins with the SavvyDISP board, hence their usage with SavvyDISP is not possible / recommended!

buttons	ATmega128 pin
SW1	PD4
SW2	PD5
LED	ATmega128 pin
green	PG3
red	PG4

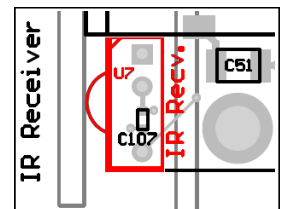
button and LED signals



control elements

INFRARED DETECTOR

An infrared detector can be assembled optionally and provides the possibility to control Savvy128 based application by a standard TV or similar remote control. The default IR detector included in the components kit is a TSOP1736, which is optimized for 36kHz signals, other frequency types can be used alternatively. See the components datasheet for details. Location of the IR detector is shown in the picture on the right. The SavvyCASE front panel and optional SavvyDISP front panel provide a small hole in front of the detector's sensitive area. The output signal of the IR detector is connected to the ATmega128 INT5/PE5 pin.



IR detector

EXPANSION CONNECTOR

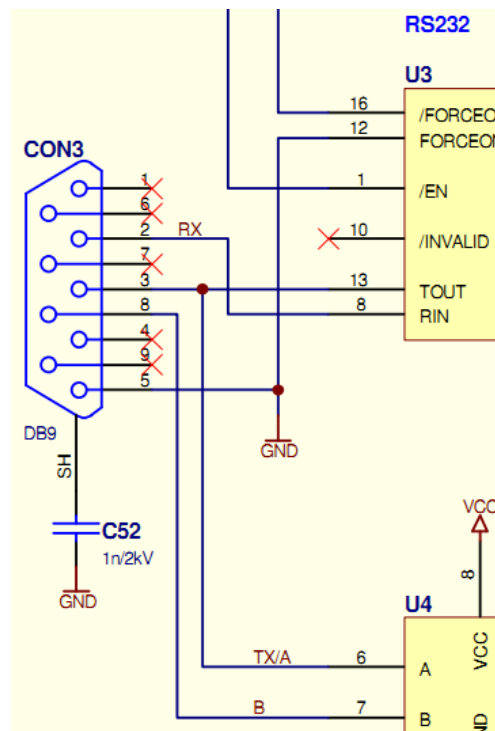
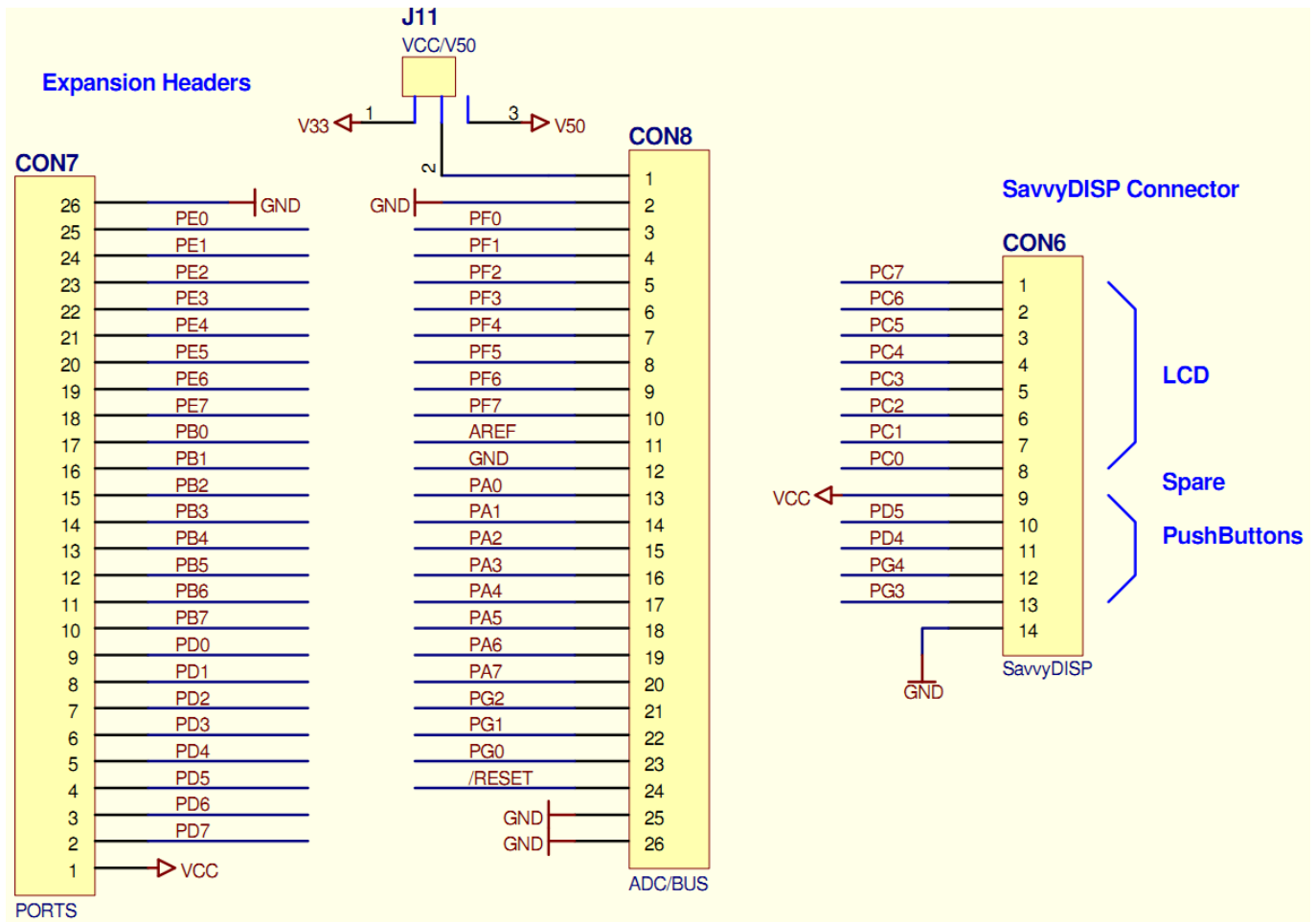
Two 26 pin headers CON7 and CON8 provide most of the ATmega128 signals and can be used for expanding the board with customer specific add-on cards. The pinout of the connectors is shown in the following table. The connectors provide standard 2.54mm grid spacing.

SavvyDISP CONNECTOR

A special 14 pin connector CON6 is located beside the push buttons and LED and provides additional expansion possibilities with one 8 bit port and 4 single bit signals. This connector is primarily intended for use with the SavvyDISP LC-display and key add-on board, which perfectly matches to the connector and the guiding rails in the plastic enclosure SavvyCASE (see chapter below). Of course the connector CON6 can be used for other purposes, the pinout is shown in the picture on the right. CON6 is based on standard 2.54mm grid spacing.

EXPANSION CONNECTORS

Note: Pin 1 is always denoted by a square pad on the PCB!



ENCLOSURE

The plastic enclosure Bopla Unimas-85 is compatible with Savvy128 and SavvyDISP and is available as SavvyCASE from chip45.com with fully machined front and rear panels for the onboard connectors and components. SavvyDISP comes with a new front panel, since it requires addition holes for LCD and buttons.



SavvyCASE

OPERATING CHARACTERISTICS

Symbol	Parameter	Condition	Min	Typ	Max	Units
Vcc	Supply Voltage	0-8 MHz	2.7		5.5	V
		0-16 MHz	4.5		5.5	V
		RS485 used	4.5		5.5	V
Icc	Power Supply Current <small>(Icc strongly depends on CPU activity, like frequency, power saving modes, etc. as well as external circuitry, io pin input and output current, etc. The values denoted here are for reference only and can differ from final application values.)</small>	Active 8MHz Vcc = 3V		16		mA
		Active 16MHz Vcc = 5V		30		mA
		USB bus active		+20		mA
T	Operating Temperature (industrial temperature range on request)		-20		+70	°C

DEVELOPMENT TOOLS

The free AVR GNU toolchain provides a powerful and stable development environment, which is nicely integrated into Atmel's AVR-Studio development suite. Please visit the following pages for more details:

- Atmel AVR Studio 4.18 (build 684): http://www.atmel.com/forms/software_download.asp?category_id=163&family_id=607&subfamily_id=760&fn=dl_AvrStudio4Setup.exe
- Atmel AVR Studio Service Pack 1 (build 692): http://www.atmel.com/dyn/resources/prod_documents/AVRStudio4.18SP1.exe
- Atmel AVR Studio Service Pack 3 (build 716): http://www.atmel.com/dyn/resources/prod_documents/AVRStudio4.18SP3.exe
- Atmel AVR Toolchain Installer: http://www.atmel.com/forms/software_download.asp?category_id=163&family_id=607&subfamily_id=760&fn=dl_avr-toolchain-installer-3.2.3.579-win32.win32.x86.exe

Note: Make sure to install both service pack 1 and service pack 3 for AVR Studio 4!

Always check

http://www.atmel.com/dyn/products/tools.asp?category_id=163&family_id=607&subfamily_id=760
for the latest version of AVR Studio or the AVR toolchain.

WHAT ELSE DO YOU NEED?

- To use the bootloader comfortably from a Windows PC application, see www.chip45.com/info/chip45boot2.html for the latest version of the chip45boot2 GUI application.
- If you prefer ISP programming, you need an ISP adapter for in-system programming of the MCU, see www.chip45.com/AVR-ISP-Programmer-Adapter for suitable devices.
- If you need source level debugging, you should consider Atmel's JTAGICE-mkII debugger (which is available here: www.chip45.de/AVR-ISP-Programmer-Adapter).
- Windows and Mac users need the latest USB driver for the CP2102 USB UART converter (see CP2102 homepage at <https://www.silabs.com/products/interface/usbtouart/Pages/default.aspx>)
- A development environment and compiler/assembler (see above DEVELOPMENT TOOLS)

Declaration of Electro Magnetic Conformity of the CHIP45 „Savvy128 V1.3”



CHIP45 embedded microcontroller modules (henceforce products) are designed for installation in electrical appliances or as dedicated evaluation boards (i.e.: for use as a test and prototype platform for hardware/software development) in laboratory environments.

Caution:

CHIP45 products lacking protective enclosures are subject to damage by ESD and, hence, may only be unpacked, handled or operated in environments in which sufficient precautionary measures have been taken in respect to ESD-dangers. It is also necessary that only appropriately trained personnel (such as electricians, technicians and engineers) handle and/or operate these products. Moreover, CHIP45 products should not be operated without protection circuitry if connections to the product's pin header rows are longer than 3m.

CHIP45 products fulfill the norms of European Union's Directive for Electro Magnetic Conformity only in accordance to the descriptions and rules of usage indicated in this document (particularly in respect to the pin header row connectors, power connector and serial interface to a host-PC).

Implementation of CHIP45 products into target devices, as well as user modifications and extensions of CHIP45 products, is subject to renewed establishment of conformity to, and certification of, Electro Magnetic Directives. Users should ensure conformance following any modifications to the products as well as implementation of the products into target systems

DISCLAIMER

In this manual are descriptions for copyrighted products that are not explicitly indicated as such. The absence of the trademark (™) and copyright (©) symbols does not imply that a product is not protected. Additionally, registered patents and trademarks are similarly not expressly indicated in this manual.

The information in this document has been carefully checked and is believed to be entirely reliable. However, chip45 GmbH & Co. KG assumes no responsibility for any inaccuracies. chip45 GmbH & Co. KG neither gives any guarantee nor accepts any liability whatsoever for consequential damages resulting from the use of this manual or its associated product. chip45 GmbH & Co. KG reserves the right to alter the information contained herein without prior notification and accepts no responsibility for any damages which might result.

Additionally, chip45 GmbH & Co. KG offers no guarantee nor accepts any liability for damages arising from the improper usage or improper installation of the hardware or software. chip45 GmbH & Co. KG further reserves the right to alter the layout and/or design of the hardware without prior notification and accepts no liability for doing so.

© Copyright 2010 chip45 GmbH & Co. KG, D-35440 Linden.

Rights - including those of translation, reprint, broadcast, photomechanical or similar reproduction and storage or processing in computer systems, in whole or in part - are reserved. No reproduction may occur without the express written consent from chip45 GmbH & Co. KG.

CONTACT INFORMATION

Address:	chip45 GmbH & Co. KG Am Pfad 8 D-35440 Linden Germany
Ordering Information:	+49 (6403) 9253-53 info@chip45.com
Technical Support:	+49 (6403) 9253-53 support@chip45.com
Fax:	+49 (6403) 9253-50
Web Site:	http://www.chip45.com