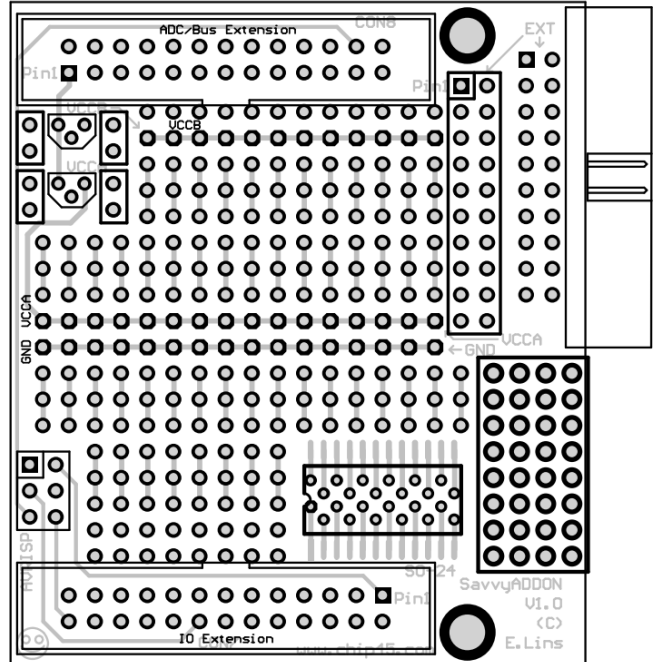
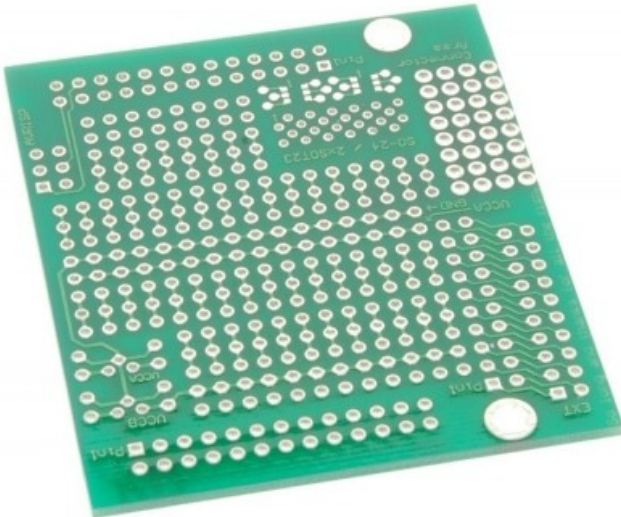


SavvyADDON-S

*OEM Prototyping Entwicklungsboard für Savvy128.*

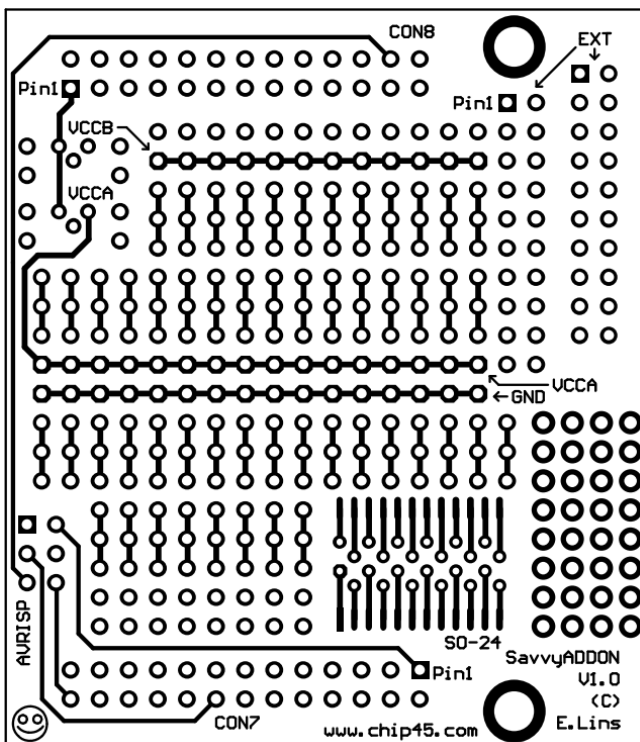
## Savvy128 Addon

(C) E.Lins, chip45.com, 30-May-2006



Note: The 6-pin ISP Header is available on the SavvyADDON board and is already connected to the proper IO extension header pins. An ISP adapter can easily be connected to the addon board.

Oberseite / Top Layer



Unterseite / Bottom Layer

